

- Extended filter life over traditional untreated cellulose on applications requiring a sturdier, more humidity resistant media
- Stronger and more durable than conventional cellulose media due to exclusive media construction and a unique resin system
- Special media treatment allows filters to maintain low airflow restriction in humid operating conditions, resulting in reduced energy requirements and lower operating costs
- MERV* 10 filtration efficiency rating per ASHRAE Standard 52.2-2007
- Flame retardant media available



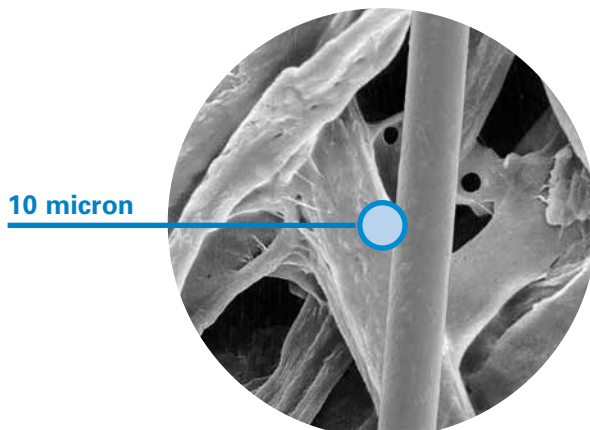
ENDURA-TEK™ CARTRIDGE

APPLICATIONS

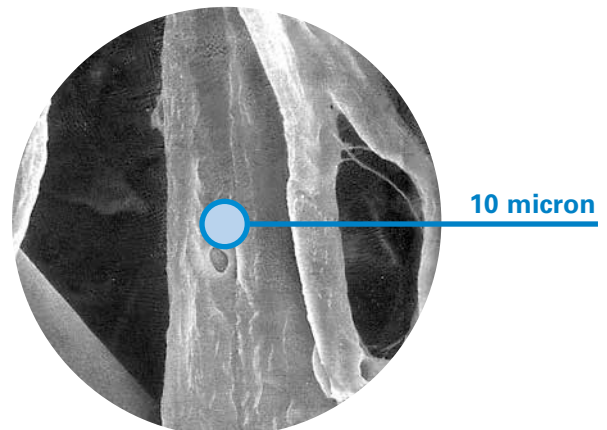
- Recommended for a wide variety of applications
- Economical solution to applications where untreated cellulose cartridges begin to fail
- Economical choice for operations with scheduled filter replacement independent of pressure drop

SEM† IMAGES

1 micron = 1/25,400 of an inch (1/1000 of a millimeter)



Endura-Tek™ Media (600x)



Competitive Media (600x)

SPECIFICATIONS

MEDIA COMPOSITION	
Substrate	Proprietary blend of cellulose and synthetic fibers

CARTRIDGE CONSTRUCTION	
Standard Construction	Galvanized expanded metal liners 72% open area Galvanized metal end caps
Structural Integrity	Donaldson's Pleatloc™ design maintains uniform pleat spacing throughout filter life Adhesive spiral beading inside the filter secures pleats and reduces pleat tip abrasion
Top Gasket	Molded one-piece urethane gaskets provide a positive, airtight seal

MEDIA EFFICIENCY	
U.S. Efficiency Rating	MERV* 10 per ASHRAE 52.2-2007

MEDIA COMPATIBILITY DATA	
Temperature Resistance	180°F 82°C
Moisture Absorption**	Maximum 14% @ 70°F (21°C) and 65% RH
Chemical Tolerance***	Acids→Poor Oxidants→Poor Bases→Fair Solvents→Fair
Abrasion Resistance	Excellent per TAPPI 476 (Taber Method)

CURRENT AVAILABLE CONFIGURATIONS

Collector Models	Filtration Area		Cartridge Dimensions		Endura-Tek	Endura-Tek FR
	ft²	m²	in	mm		
AerTable	240	22.3	12.74 x 26	323.6 x 660.4	•	•
Bin Vent (TBV)	226	21.0	12.74 x 26	323.6 x 660.4	•	•
Downdraft Bench	254	23.5	13.84 x 26	351.5 x 660.4	•	•
Downflo® (DF)	226	21.0	12.74 x 26	323.6 x 660.4	•	•
Downflo® II (DFT)	254	23.5	13.84 x 26	351.5 x 660.4	•	•
Downflo® Containment System (DCS)	190	17.7	11.4 x 14.4 x 26	289.6 x 365.8 x 660.4	•	
Downflo® Oval (DFO)	190	17.7	11.4 x 14.4 x 26	289.6 x 365.8 x 660.4	•	
Downflo® Workstation (DWS)	190	17.7	11.4 x 14.4 x 26	289.6 x 365.8 x 660.4	•	
Environmental Contro Booth (ECB)	226	21.0	12.74 x 26	323.6 x 660.4	•	•
MTD	226	21.0	12.74 x 26	323.6 x 660.4	•	•
ProBooth™	226	21.0	12.74 x 26	323.6 x 660.4	•	•
TD Large	226	21.0	12.74 x 26	323.6 x 660.4	•	•
TD Small	60	5.5	7.9 x 16	200.7 x 406.4	•	•
WeldAir	185	17.2	13.84 x 18	351.5 x 457.2		•

* The Minimum Efficiency Reporting Value (MERV) of this filter cartridge has been determined through independent laboratory testing using ASHRAE 52.2 (2007) test standards. The MERV rating was determined at a face velocity of 118 feet (36.0 meters) per minute and loading up to 4 inches (101.6 millimeters) water gauge. Actual efficiency of any filter cartridge will vary according to the specific application parameters. Dust concentration, airflow, particle characteristics, and pulse cleaning methods all affect filtration efficiency.

** Environmental conditions involving combinations of high temperature, corrosive material, and moisture can reduce media strength. Reduction in media strength may compromise cartridge integrity and performance.

*** A combination of chemicals may alter fiber resistance to the specified performance level. Chemical attack may compromise cartridge integrity and performance.

Significantly improve the performance of your collector with genuine Donaldson Torit replacement filters and parts. **Call Donaldson Torit today 800-365-1331.**



Tel 800-365-1331 (USA)
Tel 800-343-3639 (within Mexico)

donaldsontorit@donaldson.com
donaldsontorit.com

Donaldson Company, Inc.
Torit
P.O. Box 1299
Minneapolis, MN
55440-1299 U.S.A.

EXACTLY WHAT YOU NEED.™

Endura-Tek Cartridge (11/12)
© 2002 Donaldson Co., Inc. All Rights Reserved. All products, product specifications, and data (airflow, capacity, dimensions, or availability) are subject to change without notice, and may vary by region or country. Donaldson Torit is a registered trademark of Donaldson Company, Inc. Contains Donaldson proprietary technology.