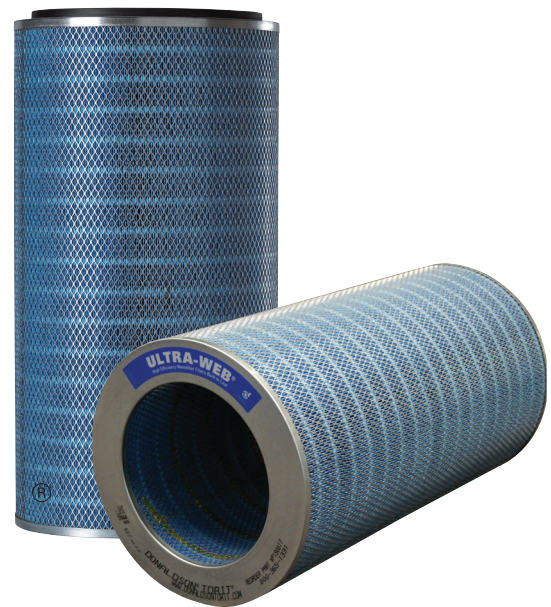


- Nanofiber technology ensures longer filter life at a significantly lower pressure drop
- Substrate media features increased rigidity, higher durability, and superior cleanability
- MERV\* 15 filtration efficiency rating per ASHRAE 52.2-2012
- Superior particle release due to surface filtration
- Lower pressure drop saves energy
- Longer filter life reduces replacement and maintenance costs
- Lightweight and easy to install
- Flame retardant media available
- Stainless steel construction available



**Ultra-Web® Cartridge**

## **THE ULTRA-WEB ADVANTAGE IS CLEANER AIR**

Ultra-Web® is proprietary and made with an electrospinning process that produces a very fine, continuous, resilient fiber of 0.2-0.3 micron in diameter to form a permanent web-like net. This nanofiber “web” with its very fine interfiber spaces is constructed onto tough cellulose substrate media, resulting in:

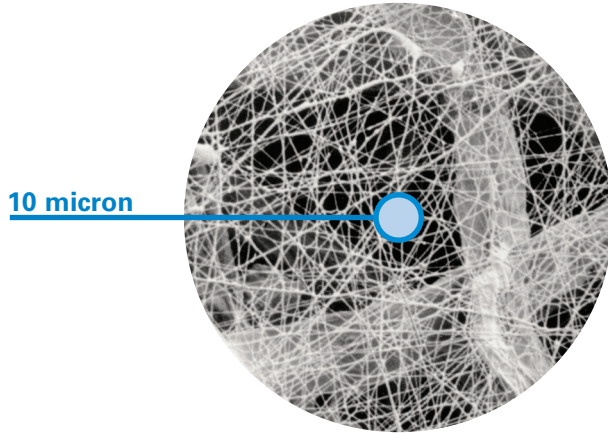
- A more robust media that captures even submicron dust on the surface
- Better pulse cleaning and lower pressure drop
- Cleaner air, longer filter life, and greater cost savings

## **APPLICATIONS**

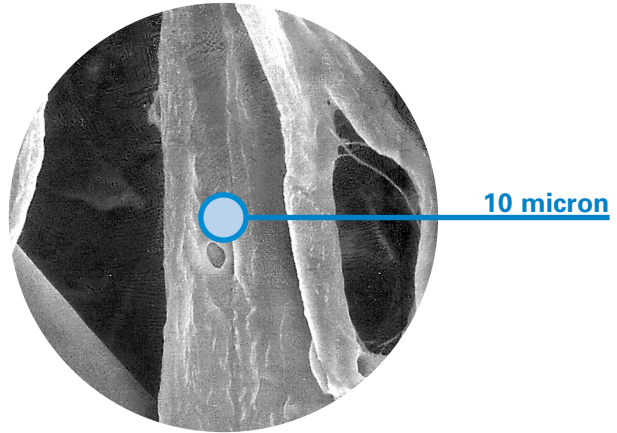
- Premium performance on extremely fine, dry, and nonfibrous dust
- Durable for more abrasive dust
- Outer liner available for most applications
- Outer liner removed for agglomerative dust applications

## SEM† IMAGES

1 micron = 1/25,400 of an inch (1/1000 of a millimeter)



**Ultra-Web (600x)**  
Featuring Nanofiber Technology



**Cellulose Media (600x)**

## SPECIFICATIONS

MEDIA COMPOSITION	
Nanofiber Technology	Durable proprietary synthetic filter media fibers and polymer Mean fiber diameter of 0.2 µm
Substrate	Proprietary blend of cellulose fibers Flame retardant version per UL® Standard 558, TAPPI Standard T 4610m-94, and DIN 53438 Part 3

CARTRIDGE CONSTRUCTION	
Standard Construction	Galvanized metal end caps Galvanized expanded metal liner 72% open area Urethane gasket
Options	Stainless steel liner and end caps No outer liner version EPDM gasket

MEDIA COMPATIBILITY DATA	
Temperature Resistance	180°F / 82°C
Moisture Absorption**	Maximum 14% @ 70°F (21°C) and 65% RH
Chemical Tolerance***	Acids→Poor      Oxidants→Poor Bases→Fair      Solvents→Fair
Abrasion Resistance	Good per TAPPI 476 (Taber Method)

MEDIA EFFICIENCY	
U.S. Efficiency Rating	MERV* 15 per ASHRAE 52.2-2012

† Scanning Electron Microscope

\* Refer to Minimum Efficiency Reporting Value on page 4.

\*\* Refer to Moisture Absorption on page 4.

\*\*\* Refer to Chemical Tolerance on page 4.

## CONFIGURATIONS

Collector Models		Filter Area		Pleat Height		Dimensions		Ultra-Web				
		ft <sup>2</sup>	m <sup>2</sup>	in	mm	in	mm	Standard	FR	NL	SS	Beaded
AerBooth		170.0 226.0	15.8 21.0	1.5 2.0	38.1 50.8	11.7 x 26.0 12.74 x 26.0	298.2 x 660.4 323.6 x 660.4	• •	• •	• •	• •	• •
Ambient Air Tubesheets	Cylindrical	226.0	21.0	2.0	50.8	12.74 x 26.0	323.6 x 660.4	•	•	•		
	Coned	260.0	24.2	2.0	50.8	12.74 x 15.9 x 26.0	323.6 x 404.4 x 660.4	•	•	•		
Bin Vent (TBV)		170.0 226.0	15.8 21.0	1.5 2.0	38.1 50.8	11.7 x 26.0 12.74 x 26.0	298.2 x 660.4 323.6 x 660.4	• •	• •	• •	• •	• •
CF Series		226.0	21.0	2.0	50.8	12.74 x 26.0	323.6 x 660.4		•			
CX Series		191.0 254.0	17.7 23.6	1.5 2.0	38.1 50.8	12.8 x 26.0 13.84 x 26.0	326.1 x 660.4 351.5 x 660.4	• •	• •	• •		• •
Downdraft Bench (DB)		191.0 254.0	17.7 23.6	1.5 2.0	38.1 50.8	12.8 x 26.0 13.84 x 26.0	326.1 x 660.4 351.5 x 660.4	• •	• •	• •		• •
Torit Downdraft Bench (TDDB)		226.0	21.0	2.0	50.8	12.74 x 26.0	323.6 x 660.4		•			
Downflo® (DF)		170.0 226.0	15.8 21.0	1.5 2.0	38.1 50.8	11.7 x 26.0 12.74 x 26.0	298.2 x 660.4 323.6 x 660.4	• •	• •	• •	• •	• •
Downflo II (DFT)		191.0 254.0	17.7 23.6	1.5 2.0	38.1 50.8	12.8 x 26.0 13.84 x 26.0	326.1 x 660.4 351.5 x 660.4	• •	• •	• •	• •	• •
Downflo Containment System (DCS)		190.0	17.7	1.5	38.1	11.4 x 14.4 x 26.0	288.5 x 364.7 x 660.4	•	•	•	•	
Downflo Oval (DFO)		190.0	17.7	1.5	38.1	11.4 x 14.4 x 26.0	288.5 x 364.7 x 660.4	•	•	•	•	
Downflo Evolution (DFE)		254.0	23.6	2	50.8	13.7 x 13.7 x 26.0	349.1 x 349.1 x 660.4	•	•	•	•	
Downflo (SDF)		103.0	9.6	1.5	38.1	9.2 x 22.3	233.9 x 566.2	•	•			
Downflo WorkStation (DWS)		190.0	17.7	1.5	38.1	11.4 x 14.4 x 26.0	288.5 x 364.7 x 660.4	•	•	•	•	
Easy-Trunk™		103.0	9.6	1.5	38.1	9.2 x 22.3	233.9 x 566.2		•			
Environmental Control Booth™ (ECB)		170.0 226.0	15.8 21.0	1.5 2.0	38.1 50.8	11.7 x 26.0 12.74 x 26.0	298.2 x 660.4 323.6 x 660.4	• •	• •	• •	• •	• •
Mini-Trunk™		72.0	6.7	1.5	38.1	9.2 x 16.0	233.9 x 406.4		•			
MTD		170.0 226.0	15.8 21.0	1.5 2.0	38.1 50.8	11.7 x 26.0 12.74 x 26.0	298.2 x 660.4 323.6 x 660.4	• •	• •	• •	• •	• •
Porta-Trunk™		220.0	20.4	2.0	50.8	17.6 x 18.0	446.5 x 457.2		•			
ProBooth™		170.0 226.0	15.8 21.0	1.5 2.0	38.1 50.8	11.7 x 26.0 12.74 x 26.0	298.2 x 660.4 323.6 x 660.4	• •	• •	• •	• •	• •
TD Large		170.0 226.0	15.8 21.0	1.5 2.0	38.1 50.8	11.7 x 26.0 12.74 x 26.0	298.2 x 660.4 323.6 x 660.4	• •	• •	• •	• •	• •
TD Small		45.0 60.0	4.2 5.6	1.5 2.0	38.1 50.8	7.9 x 16.0 7.9 x 16.0	201.4 x 406.4 201.4 x 406.4	• •	• •	• •	• •	• •
Trunk 2000 (T-2000)		212.0	19.7	2.0	50.8	13.84 x 22.0	351.5 x 558.8		•			
WeldAir		103.0 220.0	9.6 20.4	2.0 2.0	50.8 50.8	9.2 x 22.3 17.6 x 18.0	233.9 x 22.29 446.5 x 457.2		• •			
Weld Bench		254.0	23.6	2.0	50.8	13.84 x 26.0	351.5 x 660.4		•			

## MINIMUM EFFICIENCY REPORTING (MERV)

The Minimum Efficiency Reporting Value (MERV) of this filter cartridge has been determined through independent laboratory testing using ASHRAE 52.2 (2012) test standards. The MERV rating was determined at a face velocity of 118 feet per minute (36.0 meters per minute) and loading up to four inches (101.6 millimeters) water gauge. Actual efficiency of any filter cartridge will vary according to the specific application parameters. Dust concentration, airflow, particle characteristics, and pulse cleaning methods all affect filtration efficiency.

## MOISTURE ABSORPTION

Environmental conditions involving combinations of high temperature, corrosive material, and moisture can reduce media strength. Reduction in media strength may compromise cartridge integrity and performance.

## CHEMICAL TOLERANCE

A combination of chemicals may alter fiber resistance to the specified performance level. Chemical attack may compromise cartridge integrity and performance.

Significantly improve the performance of your collector with genuine Donaldson Torit replacement filters and parts. **Call Donaldson Torit today 800-365-1331.**



Tel 800-365-1331 (USA)  
Tel 800-343-3639 (within Mexico)

donaldsonorit@donaldson.com  
[donaldsonorit.com](http://donaldsonorit.com)

Donaldson Company, Inc.  
Torit  
P.O. Box 1299  
Minneapolis, MN  
55440-1299 U.S.A.

**EXACTLY WHAT YOU NEED.™**

**Ultra-Web Cartridge (6/15)**  
© 1999 Donaldson Co., Inc. All Rights Reserved. All products, product specifications, and data (airflow, capacity, dimensions, or availability) are subject to change without notice, and may vary by region or country. Donaldson Torit, Ultra-Web, and the color blue are registered trademarks of Donaldson Company, Inc. Contains Donaldson proprietary technology.